

**Interreg  
Europe**



European Union | European Regional Development Fund



*Sharing solutions  
for better regional policies*

# On the third call

**Erwin Siweris**

Programme Director | Interreg Europe

[e.siweris@interregeurope.eu](mailto:e.siweris@interregeurope.eu)

22 February 2017 | Info Day in Malta



# Summary



- **Terms of reference**
- **Reminder on the assessment**
- **Lessons learnt from previous calls**
- **Conclusion**



# TERMS OF REFERENCE

# Terms of reference: main features



## Timing:

- Opening: **1 March 2017** (online system open)
- Closing: **30 June 2017** (midday Paris time)
  
- November 2016: assistance to applicants launched
- Early 2018 – expected start of projects

# Terms of reference: main features



## Thematic scope:

- No restrictions: open to all investment priorities
- But applications encouraged under priority axis 4

## Procedure:

- Online system: [www.iolf.eu](http://www.iolf.eu)

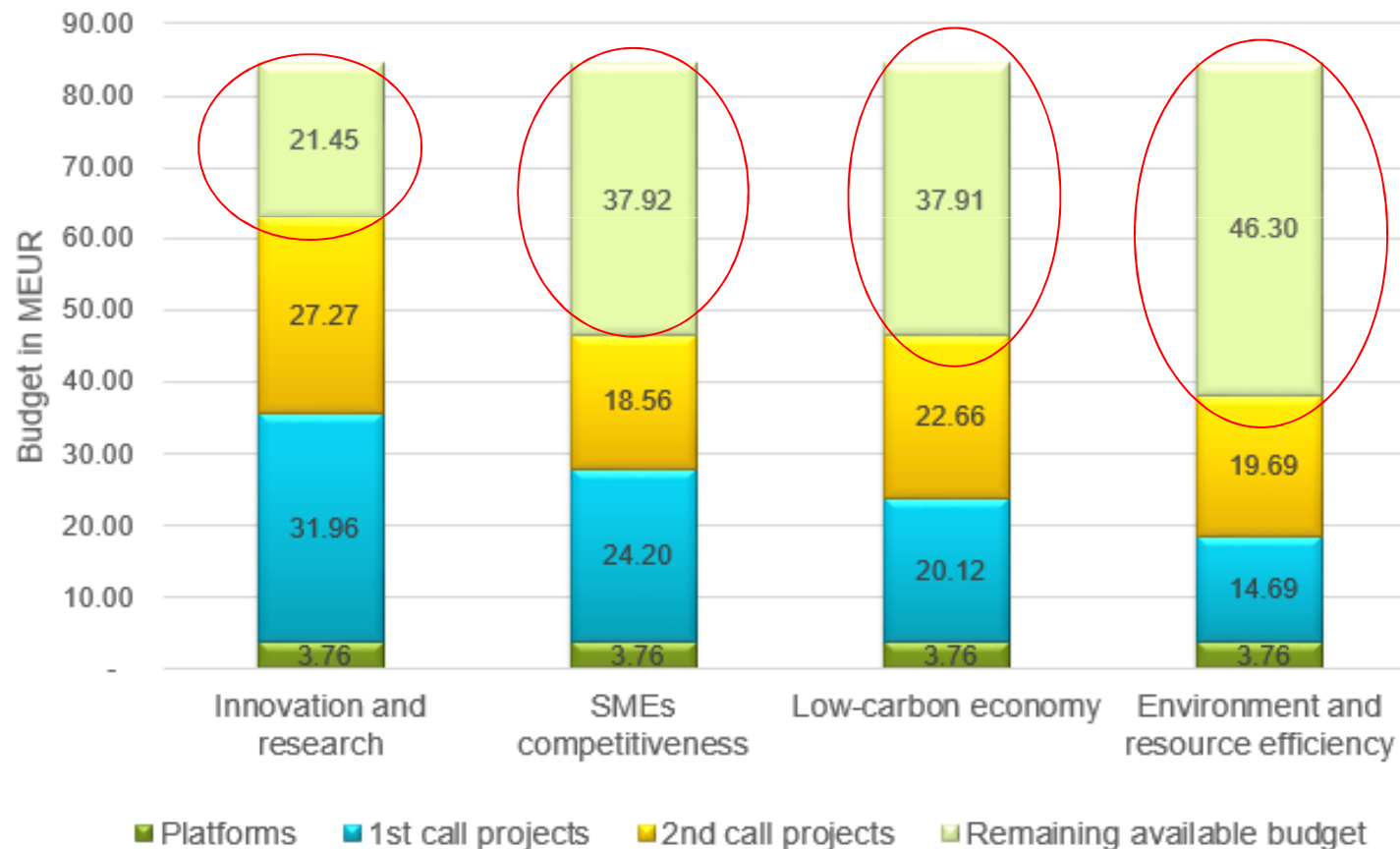


# Terms of reference: main features



## Budget available:

- All remaining ERDF per priority axis available



# Terms of reference: recommendations



- Innovative character in particular in relation to already successful topics

<p><b>Priority axis 1:</b></p> <ul style="list-style-type: none"><li>- Governance of RIS3 (7 projects)</li><li>- Clusters within RIS3 (6 projects)</li><li>- Innovation in the health sector (4 projects)</li></ul>	<p><b>Priority axis 2:</b></p> <ul style="list-style-type: none"><li>- Internationalisation of SMEs (7 projects)</li><li>- Innovation capacity of SMEs in rural / peripheral regions (6 projects)</li></ul>
<p><b>Priority axis 3:</b></p> <ul style="list-style-type: none"><li>- Energy efficiency in buildings (10 projects)</li><li>- Urban mobility (7 projects)</li></ul>	<p><b>Priority axis 4:</b></p> <ul style="list-style-type: none"><li>- Circular economy (6 projects)</li></ul>

# Terms of reference: recommendations

- Applications tackling under represented topics encouraged: **financial instruments, renewable energy or water management**
- Applications encouraged under **Priority axis 4 Environment & Resource Efficiency**
- Involvement of **regions not already represented** encouraged (annex 1 of the terms of reference)





# REMINDER ON ASSESSMENT



# Selection procedure

## 2-step procedure

- I. Eligibility assessment  
fulfilment of technical requirements
  
- II. Quality assessment  
2-step qualitative evaluation

Detailed description in the programme manual (§5.3)



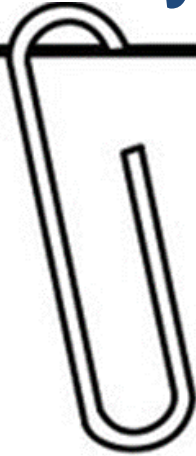
# Eligibility principles

- Technical **yes** or **no** process
- **No correction possible**
- Only eligible applications are further assessed





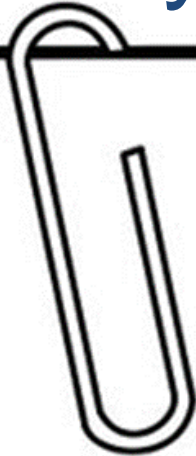
# Eligibility checklist



- ✓ Is your application **complete** (partner declarations, support letters)?
- ✓ Is the application **filled in** according to instructions?
- ✓ Is it in **English**?
- ✓ Are all **partner declarations**:
  - Signed and dated
  - With name of partner identical to application form
  - With stated amount covering **at least** the amount of partner contribution
  - With no amendments to the standard text



# Eligibility checklist



- ✓ Are **all support letters**:
  - Attached to the application form
  - Signed and dated by relevant organisation (check the country-specific list!!)
  - With name of partner(s) **identical** to application form
  - With no amendments to the standard text
  
- ✓ Are at least **3 countries** of which **2 are EU members** involved and financed by Interreg Europe?
  
- ✓ Are at least **half** of the policy instruments addressed Structural Funds programmes?

# Quality assessment



**Second step only for eligible applications!**

**2-step approach**

## 1. Strategic assessment

Criterion 1: **Relevance of proposal**

Criterion 2: **Quality of results**

Criterion 3: **Quality of partnership**

## 2. Operational assessment

Criterion 4: **Coherence of proposal & quality of approach**

Criterion 5: **Communication & Management**

Criterion 6: **Budget and finance**

Only if adequate ( $\geq 3.00$ ) proposals are further assessed (Scoring system 0 - 5)

- Decision by **monitoring committee**.
- Only projects reaching at least an **overall adequate level ( $\geq 3.00$ )** are recommended for approval (with conditions) to the monitoring committee.



# Assessment provisional timing

July – August 2017	Eligibility check
September – November 2017	Quality assessment
End 2017	Decision & notification
Early 2018	Fulfilment of conditions
Early 2018	Effective start date of projects



# LESSONS LEARNT





# Eligibility

**One NO disqualifies whole project → no assessment!**

- High rate of ineligibility (29.4%)
- Main causes of ineligibility:
  - Letters of support (missing or incorrect)
  - Partner declaration (incorrect – amount lower than necessary!)

**Make sure all documents are provided and correct.  
Don't prepare them at the last minute!**

# Eligibility



Lessons learnt integrated in the third call application pack:

1/ **Improved** instructions in the application pack:

Warning messages included in different documents

2/ **Full online** application & **improved functionalities**

Compulsory documents to be uploaded on iOLF

Automatic generation of annexes



# Quality: common weaknesses

## Topic addressed (Criterion 1):

- **Too broad** scope / **poorly** described
- **Not in line** with priority axis
- **Not reflected** in all the policy instruments addressed

Check approved projects at:

<http://www.interregeurope.eu/discover-projects/>



# Quality: common weaknesses

## Policy instruments (Criterion 1):

- Not **precisely defined** in the AF (e.g. indication of the specific priority addressed)
- Misunderstanding for Structural Funds (instrument indicated not the **Operational / Cooperation** programme)

Check country-specific pages for list of policy-relevant bodies for Structural Funds programmes at:

<http://www.interregeurope.eu/in-my-country/>



# Quality: common weaknesses

## Policy relevance of partners (Criterion 3):

- No direct involvement of bodies responsible for the policy instrument addressed
- No clear policy relevance of the partners involved: involvement in the policy-making process & capacity to influence the policy instrument

**Letter of support is not sufficient**

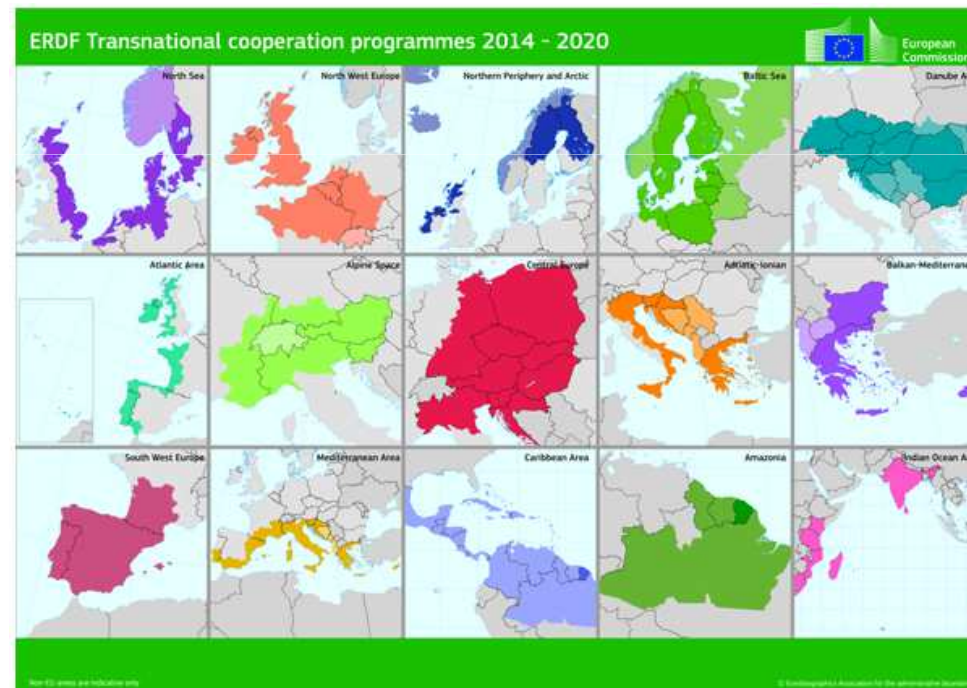
**Core elements** of quality of partnership: dedicated questions in section B.2 of the application form



# Quality: common weaknesses

## Geographical features (Criterion 3)

- Coverage limited to transnational areas



**Go beyond transnational area!**

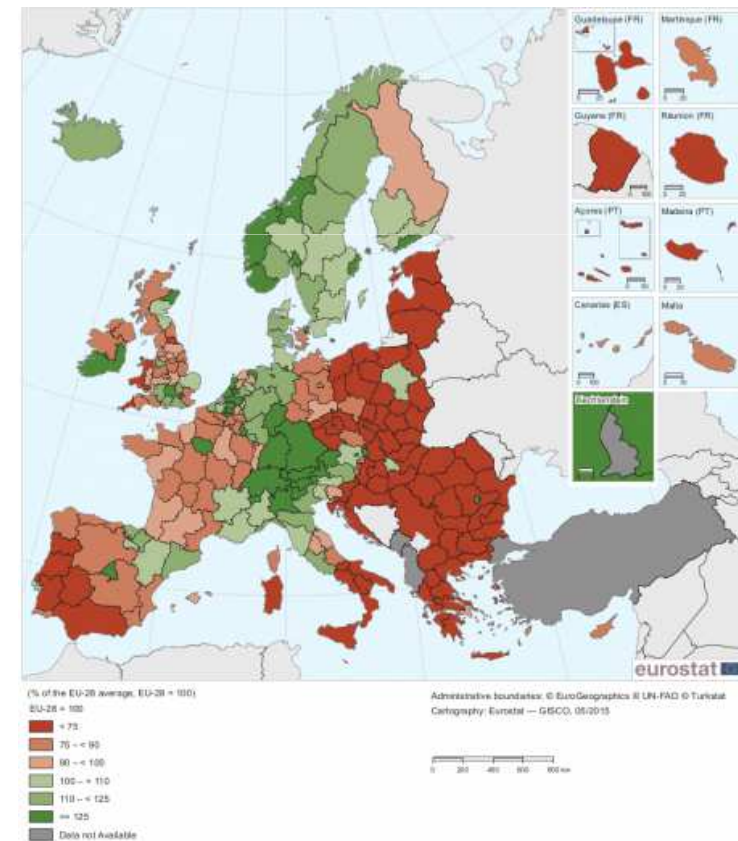


# Quality: clarification

## Mixing more and less developed regions (GDP) (Criterion 3):

### 'More and less developed regions', what does it mean?

The EC Cohesion policy aims at reducing disparities across regions in Europe. Interreg Europe contributes to this aim by encouraging regions with GDP per capita lower than 75% of the EU-28 average (less developed regions) to work with regions whose GDP per capita is higher (transition regions - GDP per capita between 75% and 90% of the EU-28 average – and more developed regions - GDP per capita above 90% of the EU-28 average). For more information, please check the [map](#) provided by the European Commission.



- **Mix more and less developed regions (GDP)**



# Quality: justification

## Multiple involvement (Criterion 3):

Involvement in numerous applications very demanding and not recommended. Multiple involvement **should be justified**.



Be **strategic**: select only the most relevant project(s) for your region





# CONCLUSION

# Importance of the application form



## **Fairness** and **equal treatment** principles

- Application Form = the **only basis** for assessment
  - same information requested from all
  - same technical requirements for all (e.g. text limits)
- Application form has to be **self-explanatory**  
Additional information / clarification not possible after submission

# Importance of the application form



## A. Project Summary

### B.1. Partners



**B.2. Policy Instruments** (definition and context, territorial context, partner relevance, stakeholders)



**C1 – C6. Project Description** (story, issue addressed, objectives, approach, communication strategy, expected results)

### C7. Horizontal principles

### C8. Management



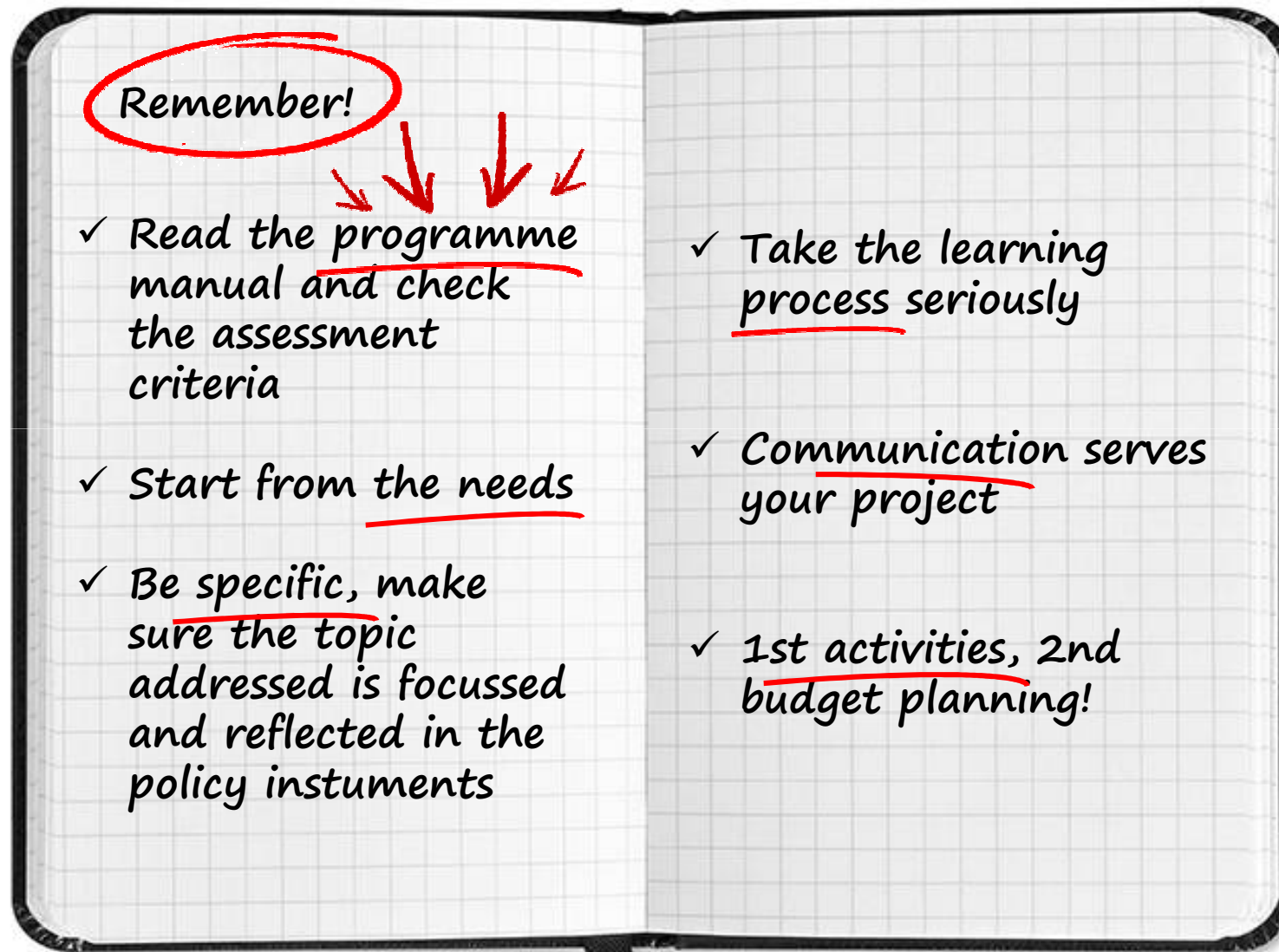
**D.1. Phase 1** (per semester)

D.2. Phase 2

} Workplan

## E. Project Budget

# Final recommendations





# Useful links

## Programme manual

- [www.interregeurope.eu/help/programme-manual/](http://www.interregeurope.eu/help/programme-manual/)

## Application pack

- [www.interregeurope.eu/projects/apply-for-funding/](http://www.interregeurope.eu/projects/apply-for-funding/)

## Online application/ reporting system

- [www.iolf.eu/](http://www.iolf.eu/)

## Interreg Europe community

- [www.interregeurope.eu/account/dashboard/](http://www.interregeurope.eu/account/dashboard/)

## Project development videos

- <http://www.interregeurope.eu/projects/project-development/>

**Interreg  
Europe**



European Union | European Regional Development Fund



*Sharing solutions  
for better regional policies*

# Thank you!

Questions welcome



Interregeurope

