

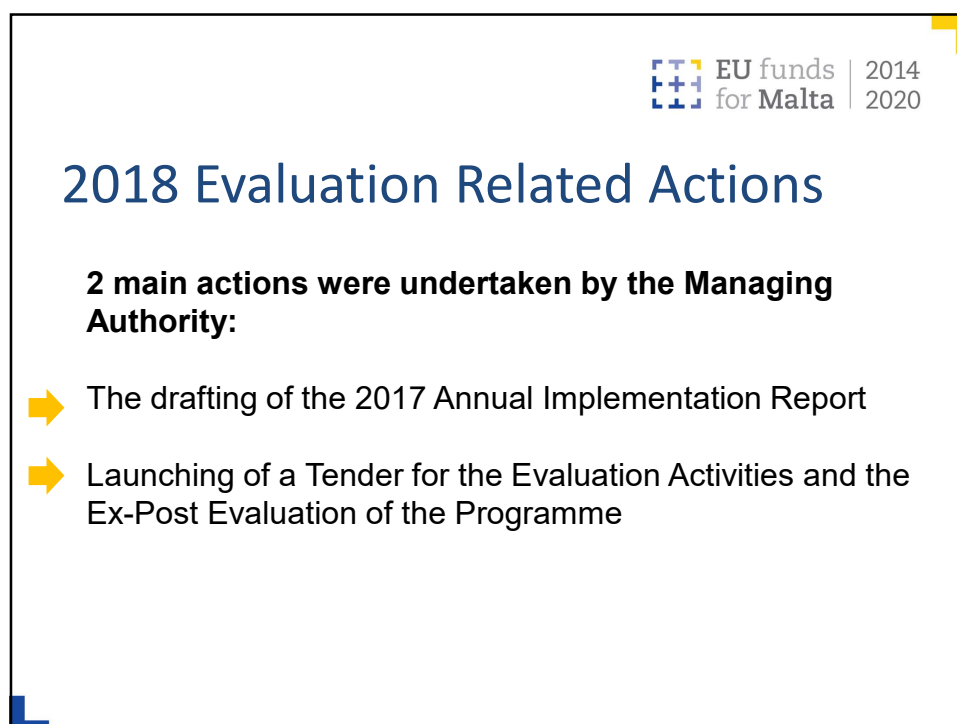
 EU funds | 2014
for Malta | 2020


Rural Development Programme for Malta
2014-2020

**Ongoing Evaluation of the Rural
Development Programme**

Monitoring Committee: 17 May 2019

 
European Union
European Structural and Investment Funds



 EU funds | 2014
for Malta | 2020

2018 Evaluation Related Actions

2 main actions were undertaken by the Managing Authority:

- ➔ The drafting of the 2017 Annual Implementation Report
- ➔ Launching of a Tender for the Evaluation Activities and the Ex-Post Evaluation of the Programme

Call for Tenders (Evaluation)

 EU funds | 2014
for Malta | 2020

- ➔ **Call for tenders:** Tender for the Evaluation Activities and the Ex-Post Evaluation of the Programme
- ➔ **Launched:** October 2018
- ➔ **Awarded:** April 2019
- ➔ **Contractor:** EMCS Ltd (together with E-Cubed Consultants and Adi Associates as sub-contractors)
- ➔ **Contract Duration:** 2019 to 2025 (7 years)

Main activities of the contract

 EU funds | 2014
for Malta | 2020

- ➔ The drafting of the Annual Implementation Reports
- ➔ The drafting of the Annual Implementation Evaluation Reports
- ➔ The drafting of a progress report template
- ➔ Ex-post evaluation
- ➔ Participation in meetings and ad hoc reporting requirements supporting the Managing Authority in the implementation of the Rural Development Programme

The Team

EU funds | 2014
for Malta | 2020

EMCS LTD

- Overall project management and co-ordination
- Drafting of the Annual Implementation Report
- Market research activities relating to evaluation

E-Cubed Consultants

- Co-ordinate and undertake evaluation activities (Annual Implementation Evaluation Report & Ex-post evaluation)

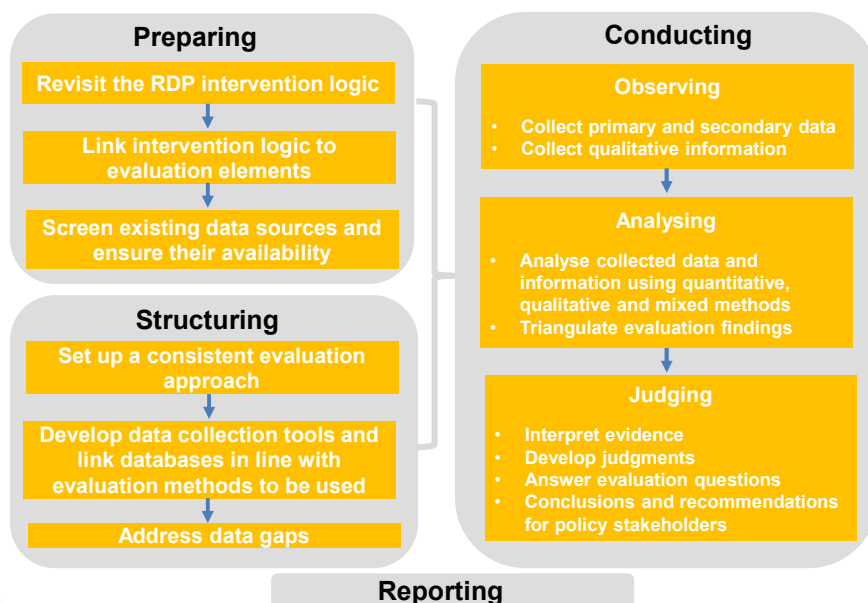
Adi Associates

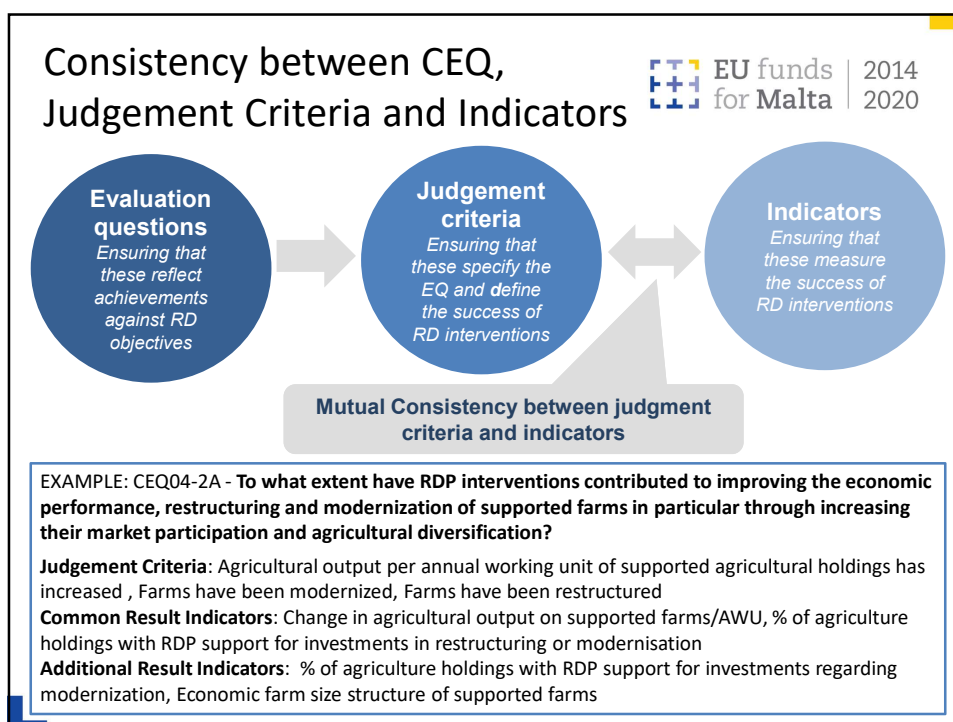
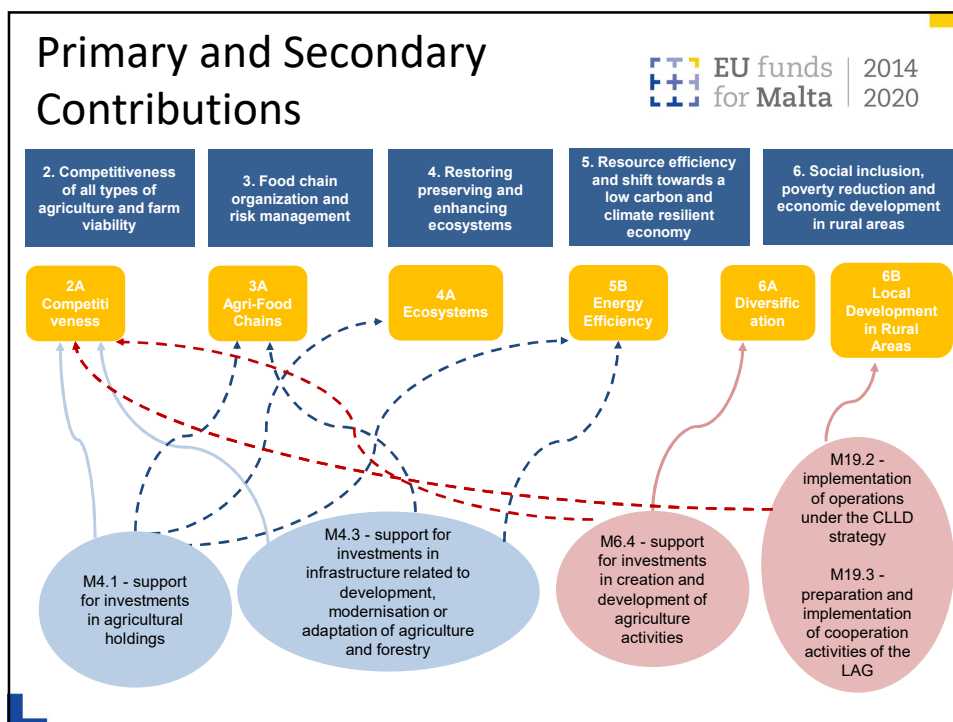
- Environmental Specialists contributing towards the evaluation activities

Foreign Experts (with evaluation expertise on an EU and International Level)

Evaluation Process

EU funds | 2014
for Malta | 2020





Evaluation Approaches

EU funds | 2014
for Malta | 2020

Quantitative
Approaches

Target indicators values are obtained directly from operation database

Applied for complementary result indicators and additional indicators, if used to answer the CEQ

Qualitative
Approaches

Includes also quantification or qualitative assessment of secondary contributions of operations to the value of indicators

List of Evaluation Questions

EU funds | 2014
for Malta | 2020

Common Evaluation Question	Common Evaluation Question
1	To what extent have RDP interventions supported innovation, cooperation and the development of the knowledge base in rural areas?
2	To what extent have RDP interventions supported the strengthening of links between agriculture, food production and forestry and research and innovation, including for the purpose of improved environmental management and performance?
3	To what extent have RDP interventions supported lifelong learning and vocational training in the agriculture and forestry sectors?
4	To what extent have RDP interventions contributed to improving the economic performance, restructuring and modernization of supported farms in particular through increasing their market participation and
5	To what extent have RDP interventions supported the entry of adequately skilled farmers into the agricultural sector and in particular, generational renewal?
6	To what extent have RDP interventions contributed to improving the competitiveness of supported primary producers by better integrating them into the agri-food chain through quality schemes, adding value to the agricultural products, promoting local markets and short supply circuits, producer groups and
7	To what extent have RDP interventions supported farm risk prevention and management?
8	To what extent have RDP interventions supported the restoration, preservation and enhancement of biodiversity including in Natura 2000 areas, areas facing natural or other specific constraints and HNV farming, and the state of European landscape?
9	9. To what extent have RDP interventions supported the improvement of water management, including fertilizer and pesticide management?
10	To what extent have RDP interventions supported the prevention of soil erosion and improvement of soil management?

List of Evaluation Questions

 EU funds | 2014
for Malta | 2020

Common Evaluation Question	Common Evaluation Question
11	11. To what extent have RDP interventions contributed to increasing efficiency in water use by agriculture?
12	12. To what extent have RDP interventions contributed to increasing efficiency in energy use in agriculture and food processing?
13	To what extent have RDP interventions contributed to the supply and use of renewable sources of energy, of by-products, wastes, residues and other non-food raw material for purposes of the bio-economy?
14	To what extent have RDP interventions contributed to reducing GHG and ammonia emissions from agriculture?
15	To what extent have RDP interventions supported carbon conservation and sequestration in agriculture and forestry?
16	To what extent have RDP interventions supported the diversification, creation and development of small enterprises and job creation?
17	To what extent have RDP interventions supported local development in rural areas?
18	18. To what extent have RDP interventions enhanced the accessibility, use and quality of information and communication technologies (ICT) in rural areas?
19	19. To what extent have the synergies among priorities and focus areas enhanced the effectiveness of the RDP?
20	To what extent has technical assistance contributed to achieving the objectives laid down in Art. 59(1) of Regulation (EU) No 1303/2013 and Art. 51(2) of Regulation (EU) No 1305/2013?
21	To what extent has the national rural network contributed to achieving the objectives laid down in Art. 54(2) of Regulation (EU) No 1305/2013?

List of Evaluation Questions

 EU funds | 2014
for Malta | 2020

Common Evaluation Question	Common Evaluation Question
22	22. To what extent has the RDP contributed to achieving the EU 2020 headline target of raising the employment rate of the population aged 20-64 to at least 75%?
23	23. To what extent has the RDP contributed to achieving the EU 2020 headline target of investing 3% of EU's GDP in research and development and innovation?
24	24. To what extent has the RDP contributed to climate change mitigation and adaptation and to achieving the EU 2020 headline target of reducing greenhouse gas emissions by at least 20% compared to 1990 levels, or by 30% if the conditions are right, to increasing the share of renewable energy in final energy consumption to 20%, and achieving 20% increase in energy efficiency?
25	25. To what extent has the RDP contributed to achieving the EU 2020 headline target of reducing the number of Europeans living below the national poverty line?
26	26. To what extent has the RDP contributed to improving the environment and to achieving the EU Biodiversity strategy target of halting the loss of biodiversity and the degradation of ecosystem services, and to restore them?
27	27. To what extent has the RDP contributed to the CAP objective of fostering the competitiveness of agriculture?
28	28. To what extent has the RDP contributed to the CAP objective of ensuring sustainable management of natural resources and climate action?
29	29. To what extent has the RDP contributed to the CAP objective of achieving a balanced territorial development of rural economies and communities including the creation and maintenance of employment?
30	30. To what extent has the RDP contributed to fostering innovation

Thank you for your attention.

 EU funds | 2014
for Malta | 2020



European Union
European Structural and Investment Funds

